

YS610 整机散装安装说明:

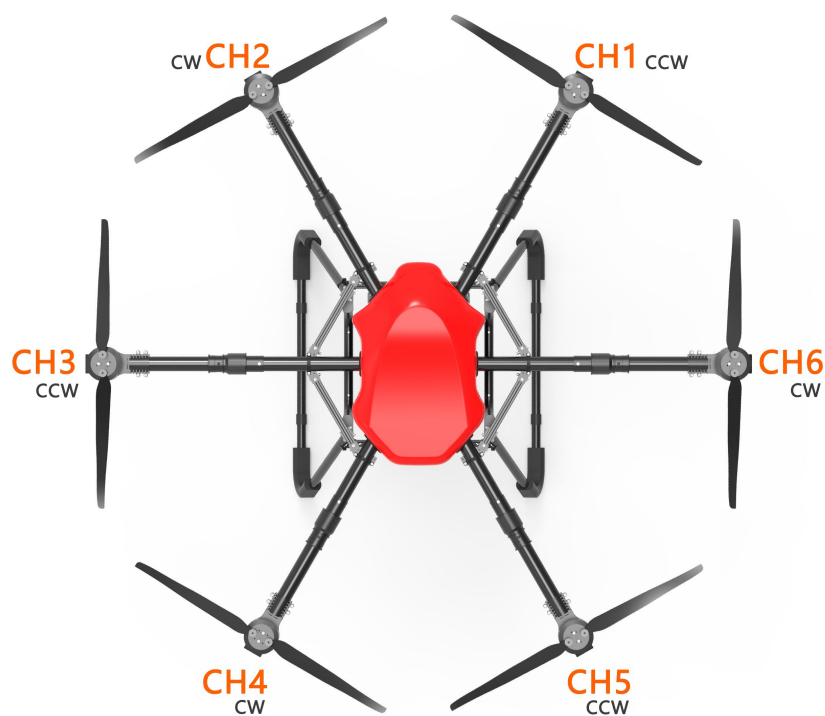
YS610 bulk installation instructions for the entire machine:



备注: 收到后先拆下中心盘, 飞控安装板, 以及面板, 拆下后再进行安装, 接收机以及插头可以先拔掉, 电源插头都可以拔掉

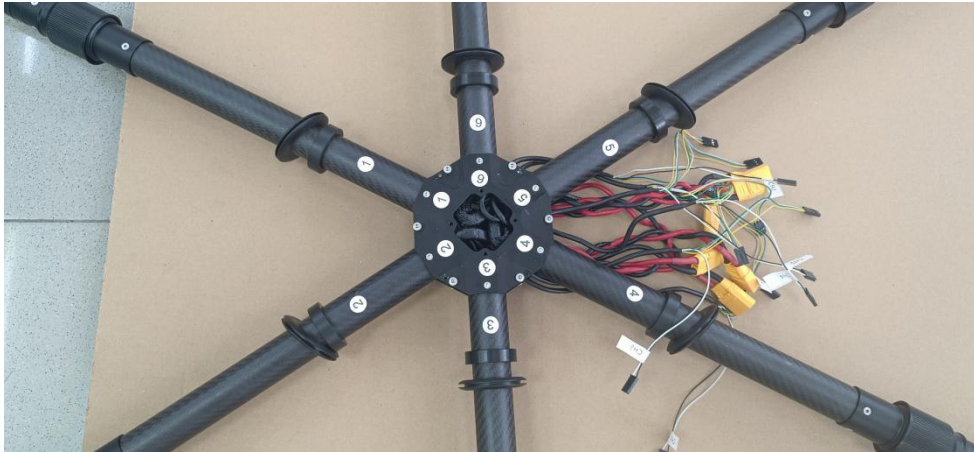
Note: Upon receipt, remove the center disk, flight control mounting plate, and panel first, and then proceed with installation after removal. The receiver and plug can be unplugged first, and the power plug can also be unplugged.

机臂安装方向示意图



1. 安装机臂，按照机臂 CH1、CH2、CH3、CH4、CH5、CH6 机臂顺序安装，先穿好机臂电源以及信号线，完成后固定在中心固定座上，如图所示

1. Install the boom in the order of boom CH1, CH2, CH3, CH4, CH5, and CH6. First, thread the boom power and signal lines, and then fix them on the center fixed seat, as shown in the figure.



固定中心安装座螺丝及螺母 对应 123456 机臂及中心盘的标签标识安装；动力电源及信号线从中心盘底下出；

Install the label identification of the 123456 arm and center plate corresponding to the screws and nuts of the fixed center mounting seat; The power supply and signal lines come out from under the center panel;

2.脚架安装，只需固定安装配套的固定螺丝即可； Installation of the tripod only requires fixing the matching screws for installation

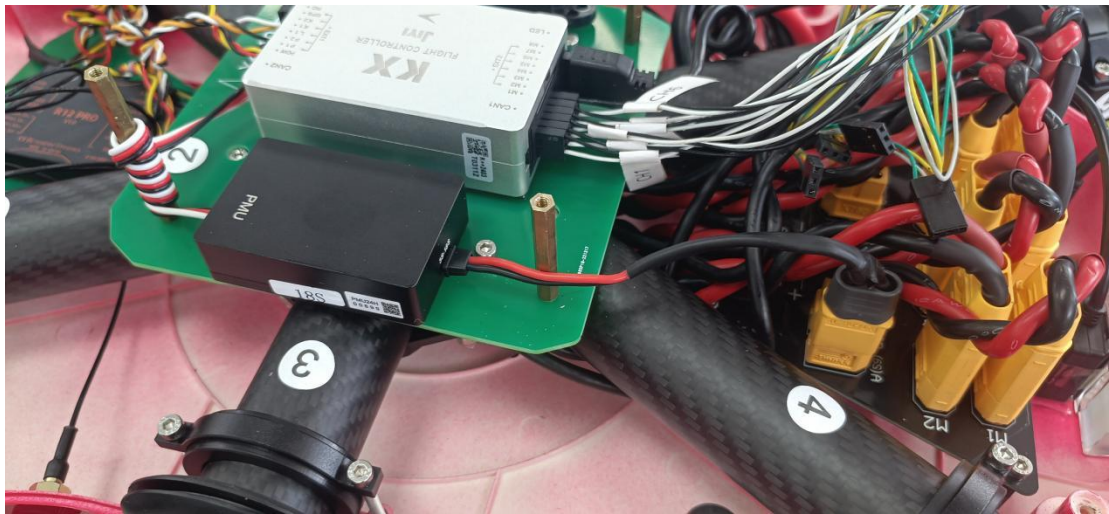
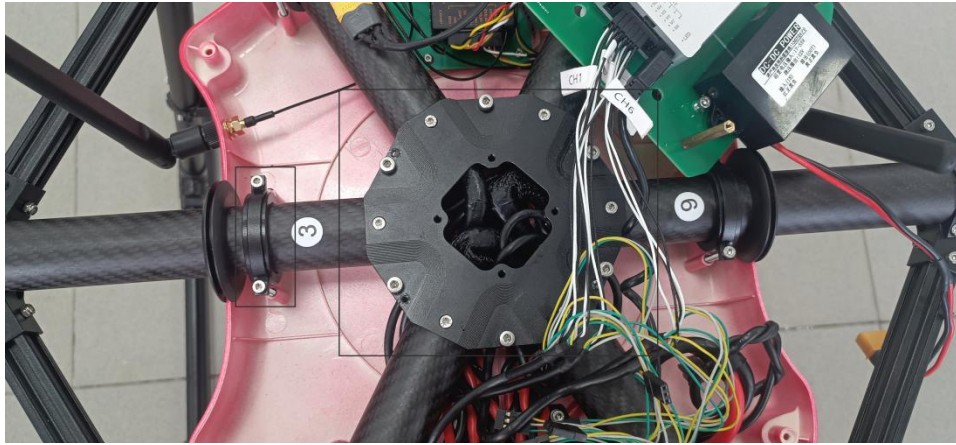


脚架安装示意图； Installation diagram of tripod;

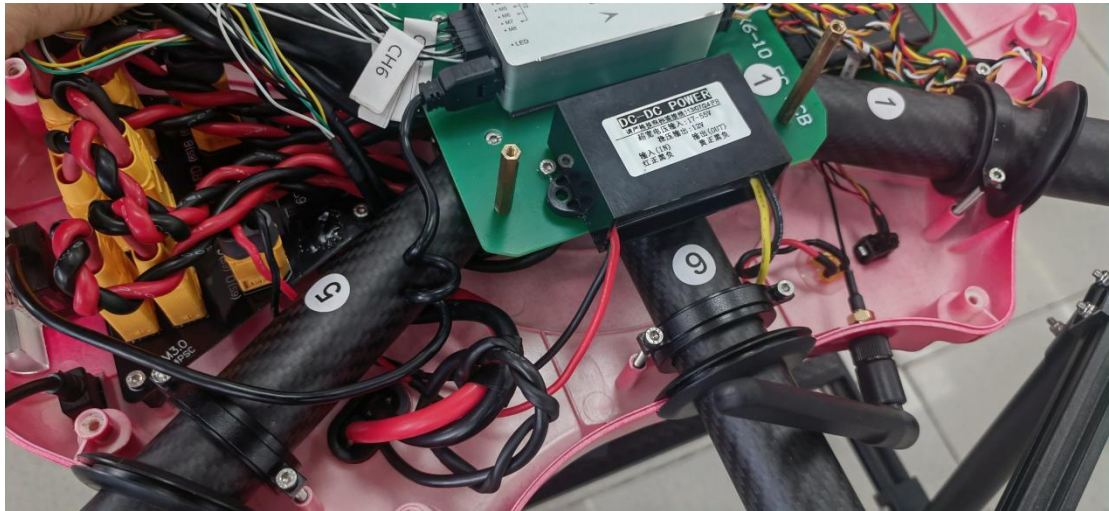
3. 安装机壳底壳；根据底壳安装螺丝，收到后先拆下中心盘，所用固定机壳螺丝原样装回，动力电源线及信号线如图所示安装，备注：安装机壳时注意不要压线。

3. Install the bottom shell of the machine casing; According to the installation screws of the bottom shell, after receiving it, first remove the center plate and reinstall the screws used to fix the shell as it is,

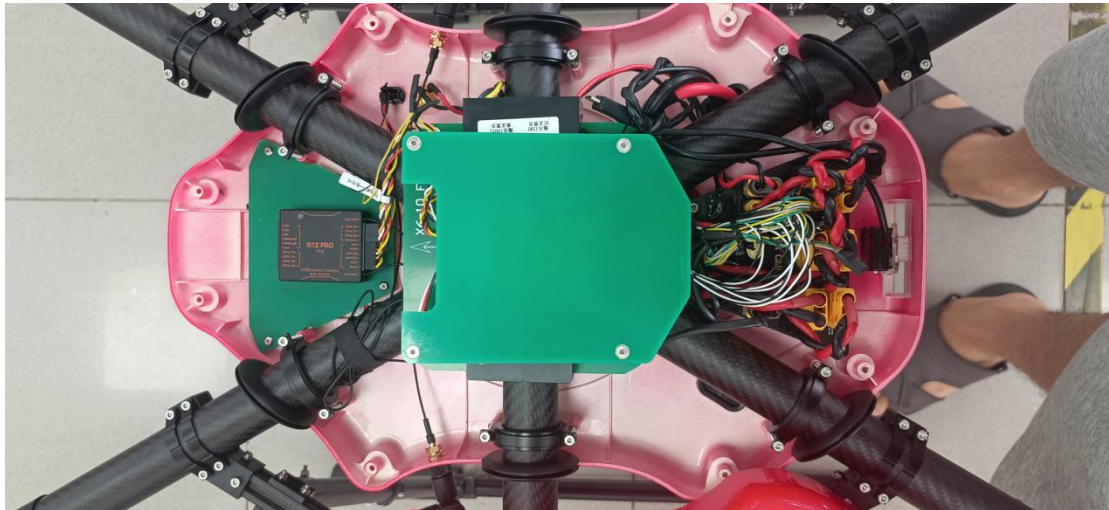
Install the power and signal wires as shown in the diagram. Note: Be careful not to press the wires when installing the casing.



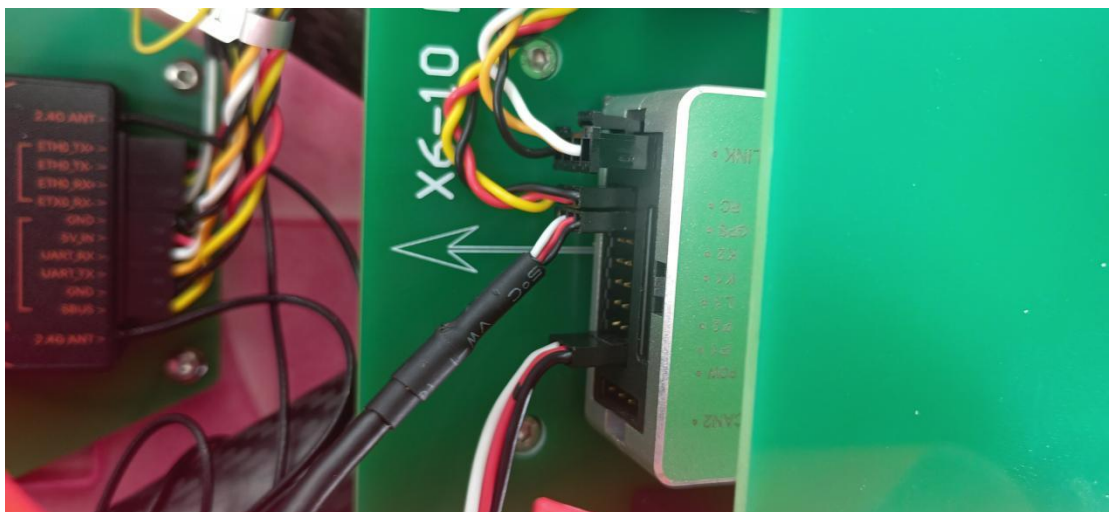
飞控电源接线，动力电源插线，如图； Flight control power supply wiring, power supply plug, as shown in the figure



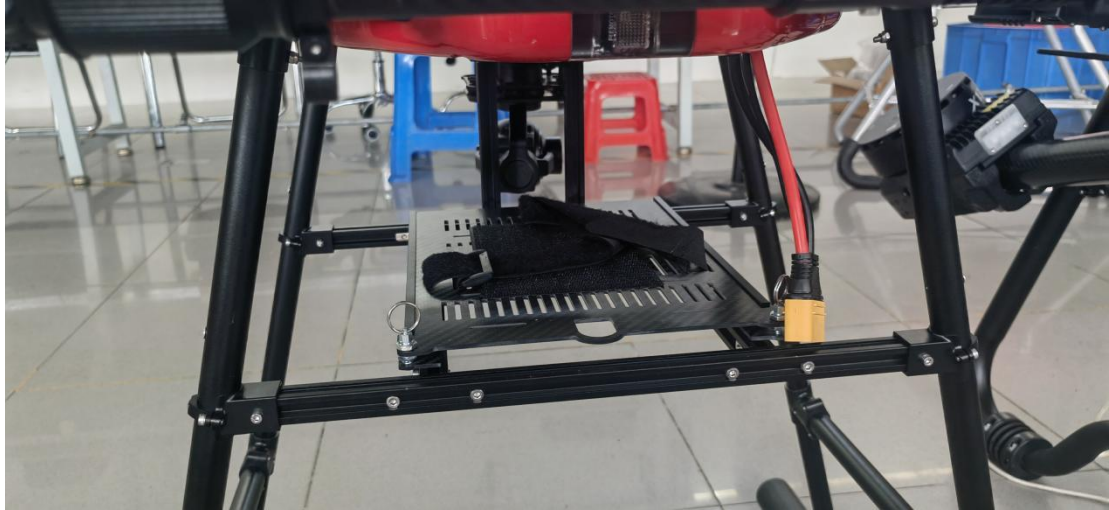
云台供电如图：Power supply for gimbal as shown in the picture



接线完成后可以安装盖板，GPS 对应飞控的 GPS 口插，完成后即可盖上机壳，锁紧所有螺丝后进行飞行测试；After the wiring is completed, the cover plate can be installed, and the GPS port corresponding to the flight control can be plugged in. After completion, the chassis can be covered, all screws can be locked, and the flight test can be carried out



GPS 对应插入飞控；Insert GPS corresponding to the flight controller



电池平台最后安装，The battery platform is finally installed,
对应插入云台的信号及电源插头；Corresponding to the signal and power plug inserted into the gimbal



平台安装后，安装云台吊舱，螺丝对应螺母及垫片的安装锁紧方式；After the platform is installed, install the gimbal pod and lock the screws with corresponding nuts and washers.



对应安装螺旋桨，安装即完成，可进行通电测试飞行； Corresponding to the installation of propellers, the installation is completed and can be tested for power on flight;